



2 Defoe Close, Chatham

Chatham

In Excess of £400,000





## 2 Defoe Close

Chatham, Chatham

A stunning three bedroom detached family home in a wonderful location offering an amazing living space. The property has been finished to a high standard throughout and consists internally of a welcoming entrance hall, large open lounge leading to the dining area, modern fitted kitchen with a range of fitted units, utility room and a conservatory over looking the rear garden.

Council tax band: D

Tenure: Freehold

- Close To Transport Links & Amenities
- Cul De Sac Location
- Garage
- Downstairs WC
- Modern Fitted Bathroom
- Sought After Location
- Landscaped Garden
- Bloc Paved Driveway

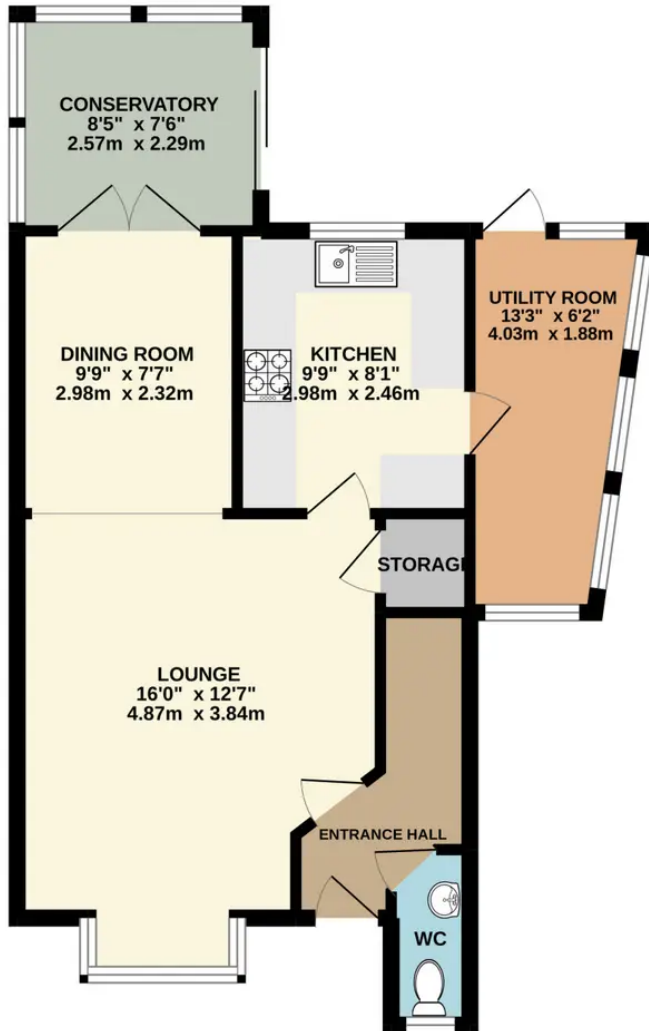




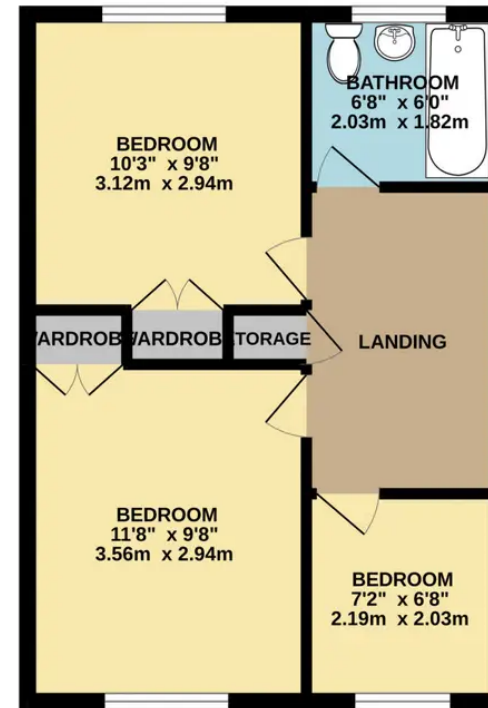




GROUND FLOOR  
526 sq.ft. (48.9 sq.m.) approx.



1ST FLOOR  
388 sq.ft. (36.1 sq.m.) approx.



TOTAL FLOOR AREA : 914 sq.ft. (84.9 sq.m.) approx.

Whilst every attempt has been made to ensure the accuracy of the floorplan contained here, measurements of doors, windows, rooms and any other items are approximate and no responsibility is taken for any error, omission or mis-statement. This plan is for illustrative purposes only and should be used as such by any prospective purchaser. The services, systems and appliances shown have not been tested and no guarantee as to their operability or efficiency can be given.  
Made with Metropix ©2022





## Freeman & Gray

Office 15-16 Fort Bridgewood, Rochester - ME1 3DQ

01634 310339

[info@freemanandgray.com](mailto:info@freemanandgray.com)

<https://www.freemanandgray.com/>

