



**Derwent Way, Gillingham, ME8**

£290,000



# Property Description

**\*\*A STUNNING THREE BEDROOM HOUSE WITH PLENTY OF PARKING. PERFECT FOR FIRST TIME BUYERS, BTL INVESTORS AND FAMILIES\*\*NO CHAIN\*\***

Freeman & Gray are pleased to be able to offer for sale this delightful three bedroom family home set within close proximity to local shops, schools and transport facilities.

Benefiting from ground floor cloakroom, spacious rooms and a beautiful garden this property will suit any growing family. Briefly comprising of porch, hallway, cloakroom, modern kitchen, open plan lounge and dining room to the ground floor. Tthe first floor boasts three generously sized bedrooms and family bathroom.

Outside the property the large rear garden is mainly laid to lawn with a beautiful patio seating area. The property benefits from large driveway for multiple vehicles to the front of the property.

Derwent Way is situated within walking distance to the town centre where you will find most amenities and the mainline train station with high speed links into London St Pancras. Rainham also has excellent motorway links for the M2/M20 networks.

EPC Rating: D



# Key Features

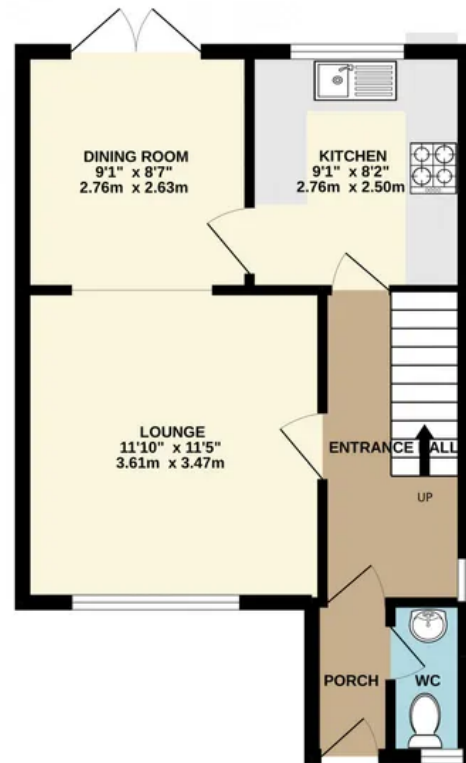
- ✓ Large Driveway
- ✓ Large Garden
- ✓ Modern Interior
- ✓ No Chain!
- ✓ Downstairs WC
- ✓ School Catchment



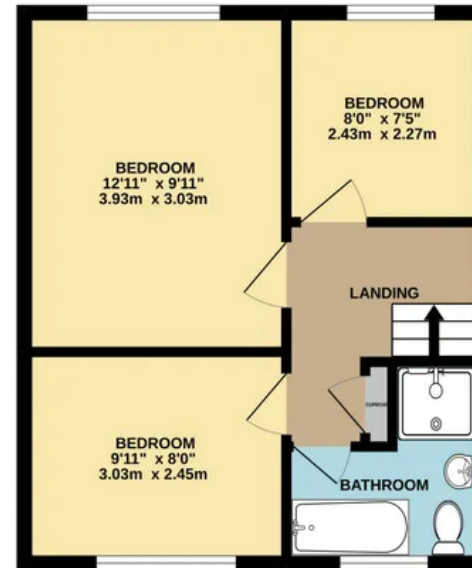


# All

GROUND FLOOR



1ST FLOOR



Whilst every attempt has been made to ensure the accuracy of the floorplan contained here, measurements of doors, windows, rooms and any other items are approximate and no responsibility is taken for any error, omission or mis-statement. This plan is for illustrative purposes only and should be used as such by any prospective purchaser. The services, systems and appliances shown have not been tested and no guarantee as to their operability or efficiency can be given.  
Made with Metropix ©2022

## **Freeman & Gray**

01634 310339

[info@freemanandgray.com](mailto:info@freemanandgray.com)

