



Rapson End, Sittingbourne, ME10

£230,000 Guide Price



Property Description

****Guide Price £230,000 to £240,000****

We are proud to offer to the market this stunning ex-show home apartment finished to an incredible standard throughout and benefiting from allocated parking, private patio and one of the largest square footage in the development.

The property comprises secure communal entrance, entrance hall with storage and utility cupboard, two double bedrooms, spacious family bathroom and open plan kitchen/living room. Outside there is a generous private patio overlooking the communal gardens and allocated parking.

EPC Rating: C



Key Features

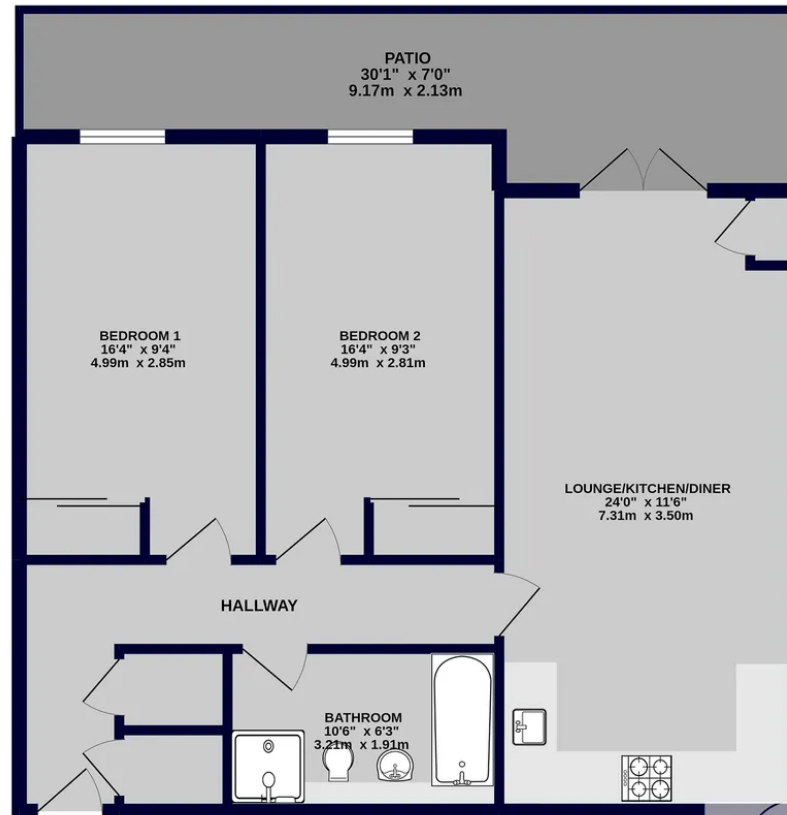
- ✓ Shops and amenities nearby
- ✓ Close to public transport
- ✓ Modern Fitted Kitchen
- ✓ Desirable Location
- ✓ Immaculately Presented
- ✓ Fitted Kitchen
- ✓ School Catchment
- ✓ Modern Fitted Bathroom
- ✓ Off Road Parking





All

GROUND FLOOR
760 sq.ft. (70.6 sq.m.) approx.



TOTAL FLOOR AREA : 760 sq.ft. (70.6 sq.m.) approx.

Whilst every attempt has been made to ensure the accuracy of the floorplan contained here, measurements of doors, windows, rooms and any other items are approximate and no responsibility is taken for any error, omission or mis-statement. This plan is for illustrative purposes only and should be used as such by any prospective purchaser. The services, systems and appliances shown have not been tested and no guarantee as to their operability or efficiency can be given.

Freeman & Gray

01634 310339

info@freemanandgray.com

