



42 Stratford Way, Northfleet

Gravesend

In Excess of £600,000





## 42 Stratford Way

Northfleet, Gravesend

Experience the epitome of luxury living in this exquisite 4-bedroom townhouse nestled in the prestigious Ebbsfleet community. Every aspect of this home exudes opulence, providing a haven of sophistication and comfort.

Council Tax band: E

Tenure: Freehold

- Just over a mile to Ebbsfleet International station, you can be in St Pancras in less than 20 minutes
- Landscaped front garden and turfed rear garden
- 10 year NHBC warranty with 7 years remaining
- Luxurious en-suite with free standing bath
- Balcony with stunning views
- Bloc paved driveway to front
- Integral garage
- Early viewing advised!

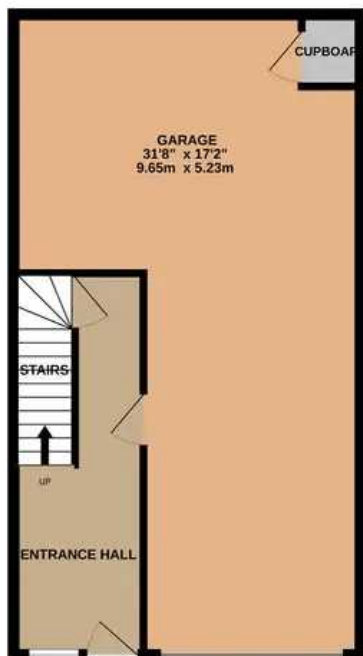




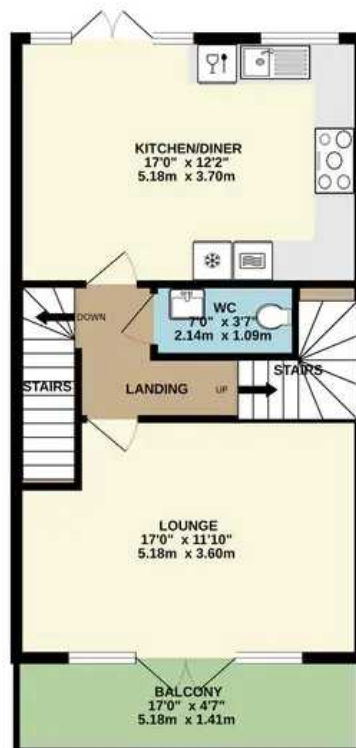




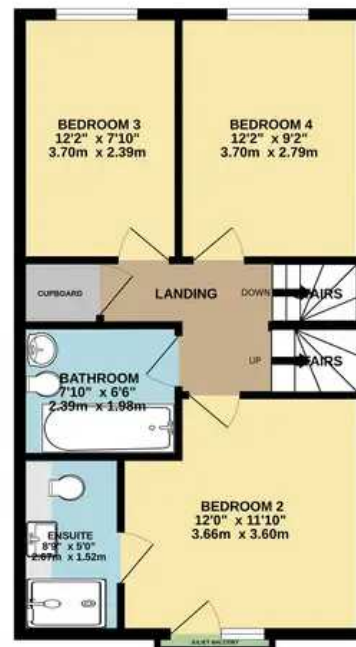
GROUND FLOOR  
543 sq.ft. (50.5 sq.m.) approx.



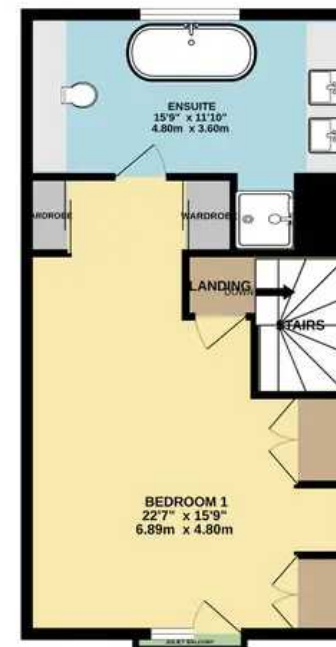
1ST FLOOR  
521 sq.ft. (48.4 sq.m.) approx.



2ND FLOOR  
521 sq.ft. (48.4 sq.m.) approx.



3RD FLOOR  
475 sq.ft. (44.1 sq.m.) approx.



TOTAL FLOOR AREA : 2060 sq.ft. (191.3 sq.m.) approx.

Whilst every attempt has been made to ensure the accuracy of the floorplan contained here, measurements of doors, windows, rooms and any other items are approximate and no responsibility is taken for any error, omission or mis-statement. This plan is for illustrative purposes only and should be used as such by any prospective purchaser. The services, systems and appliances shown have not been tested and no guarantee as to their operability or efficiency can be given.  
Made with Metropix ©2023





## Freeman & Gray

Office 15-16 Fort Bridgewood, Rochester - ME1 3DQ

01634 310339

[info@freemanandgray.com](mailto:info@freemanandgray.com)

[www.freemanandgray.com/](http://www.freemanandgray.com/)

