



4 Poachers Close, Lordswood

Chatham

In Excess of £375,000



4 Poachers Close

Lordswood, Chatham

Charming 2-bed bungalow in sought-after location. Tranquil retreat with immaculate living space, modern bathroom and landscaped garden. Convenient for shops and transport links. Don't miss out!

Council Tax band: D

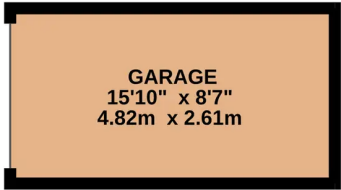
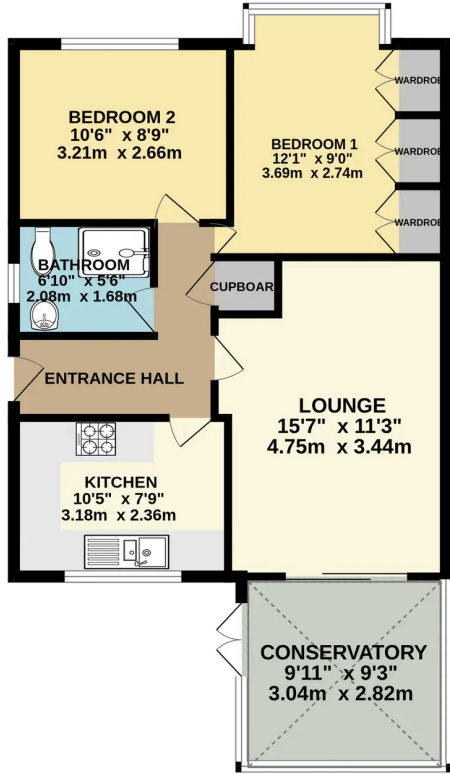
Tenure: Freehold

- Chain Free
- Detached Bungalow
- Sought After Location
- Two Bedrooms
- Landscaped Garden
- Modern Fitted Bathroom
- Driveway For Numerous Vehicles
- Detached Garage With Parking To Front
- Close Proximity To Shops & Transport Links
- Early Viewing Advised!





GROUND FLOOR
786 sq.ft. (73.0 sq.m.) approx.



TOTAL FLOOR AREA : 786 sq.ft. (73.0 sq.m.) approx.

Whilst every attempt has been made to ensure the accuracy of the floorplan contained here, measurements of doors, windows, rooms and any other items are approximate and no responsibility is taken for any error, omission or mis-statement. This plan is for illustrative purposes only and should be used as such by any prospective purchaser. The services, systems and appliances shown have not been tested and no guarantee as to their operability or efficiency can be given.
Made with Metropix ©2023





Freeman & Gray

Office 15-16 Fort Bridgewood, Rochester - ME1 3DQ

01634 310339

info@freemanandgray.com

www.freemanandgray.com/

